



Hego

Multiple Graphic Loop Pile Collection

Graphix

Broad Loom Carpet



## INDEX

[POLO – PG 4 TO 15](#)

[FASTLINE – PG 16 TO 25](#)

[ZIGZAG - PG 26 TO 37](#)

[HIGHWAY – PG 38 TO 45](#)

[ROMANCE – PG 46 TO 53](#)

PERFECT FOR BOTH RESIDENTIAL AND COMMERCIAL SPACES, OUR WALL-TO-WALL CARPETS ARE DESIGNED TO WITHSTAND THE TEST OF TIME WHILE ADDING AN AIR OF SOPHISTICATION TO ANY ROOM. WHETHER YOU'RE RENOVATING YOUR HOME OR UPGRADING YOUR BUSINESS PREMISES, THESE CARPETS ARE THE EPITOME OF LUXURY AND PRACTICALITY.

*Hego*



## DISCOVER UNMATCHED ELEGANCE WITH OUR WALL-TO-WALL CARPET COLLECTION!

INDULGE IN THE PERFECT FUSION OF OPULENCE AND DURABILITY WITH OUR WALL-TO-WALL CARPET COLLECTION. CRAFTED TO ELEVATE YOUR INTERIOR SPACES, THIS COLLECTION BOASTS A LUXURIOUS LOOP PILE DESIGN, CAREFULLY CONSTRUCTED WITH A PLUSH 400 GSM (GRAMS PER SQUARE METER) WEIGHT FOR A SOFT, COMFORTABLE UNDERFOOT EXPERIENCE.

**DESIGN VARIETY:** CHOOSE FROM AN ARRAY OF 5 METICULOUSLY CURATED DESIGNS, EACH THOUGHTFULLY CREATED TO CATER TO VARIOUS INTERIOR AESTHETICS. WHETHER YOU PREFER THE TIMELESS CHARM OF CLASSICAL PATTERNS OR THE CONTEMPORARY ALLURE OF MODERN MOTIFS, OUR COLLECTION HAS A DESIGN THAT WILL HARMONIZE SEAMLESSLY WITH YOUR VISION.

**MATERIAL EXCELLENCE:** OUR CARPETS ARE CRAFTED USING SOLUTION-DYED POLYPROPYLENE (PP), RENOWNED FOR ITS REMARKABLE RESILIENCE AND COLORFASTNESS.

**WIDE RANGE OF OPTIONS:** WITH AN IMPRESSIVE SELECTION OF 24 SKUs, OUR WALL-TO-WALL CARPET COLLECTION OFFERS AN EXTENSIVE PALETTE OF COLORWAYS AND DESIGN VARIATIONS. THIS DIVERSITY ALLOWS YOU TO FIND THE PERFECT MATCH FOR YOUR DECOR, FROM SUBTLE NEUTRALS TO BOLD STATEMENT PIECES.





[GO TO INDEX](#)

# POLO



9920 - BROWN





[GO TO INDEX](#)



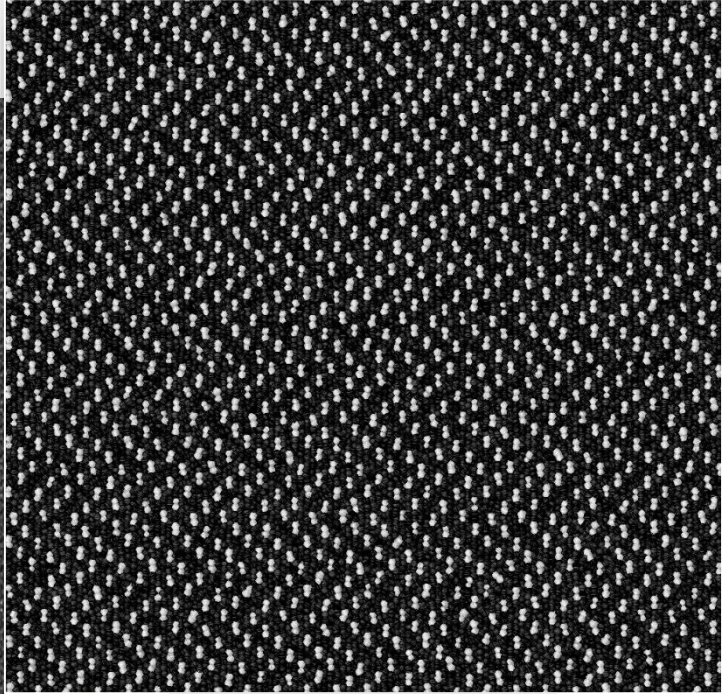
9920 - BROWN

POLO



[GO TO INDEX](#)

# POLO



9921 - GREY





[GO TO INDEX](#)

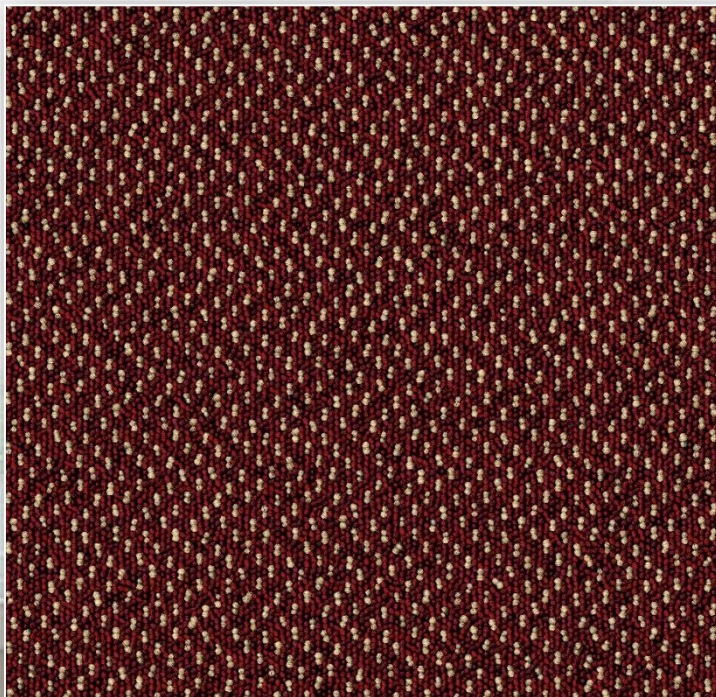
**POLO**

9921 - GREY



[GO TO INDEX](#)

# POLO



9922 - RED





[GO TO INDEX](#)



**POLO**

9922 - RED



[GO TO INDEX](#)

# POLO



9923 – BLACK





[GO TO INDEX](#)

**POLO**



9923 – BLACK



[GO TO INDEX](#)

# POLO



9924 – D.BLUE





[GO TO INDEX](#)



9924 – D.BLUE



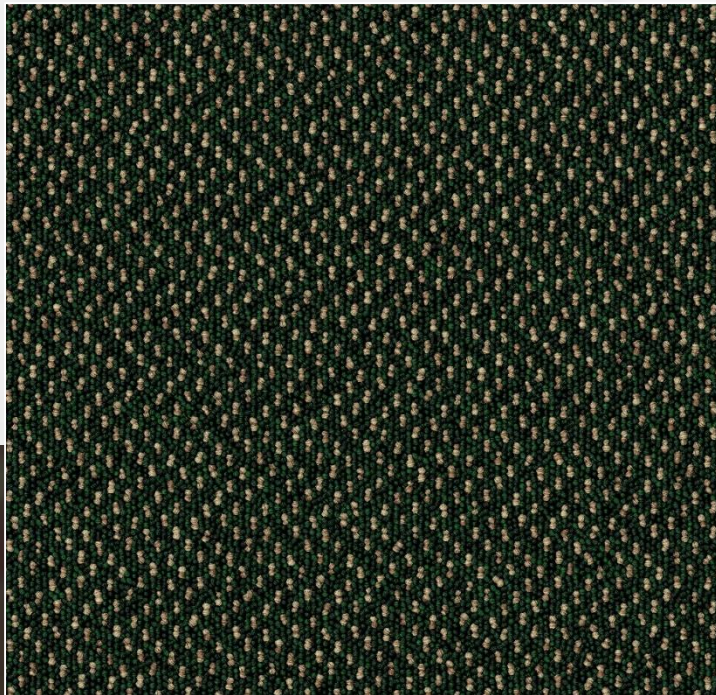
**POLO**





[GO TO INDEX](#)

# POLO



9925 – GREEN





[GO TO INDEX](#)



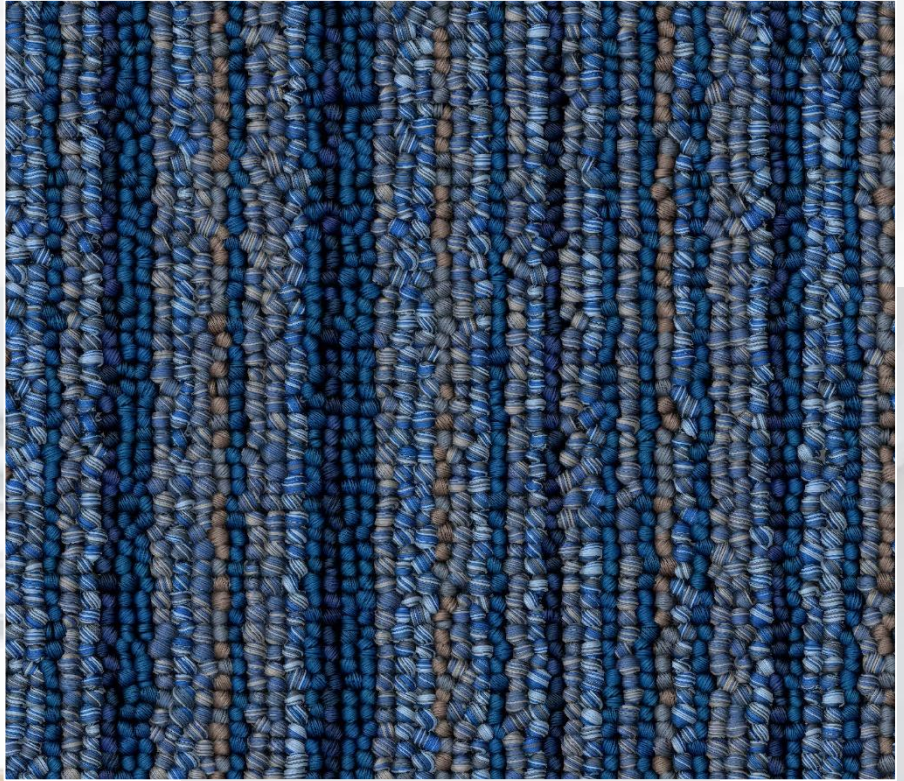
**POLO**

**9925 – GREEN**



[GO TO INDEX](#)

# FASTLINE



9940 – BLUE





[GO TO INDEX](#)

**FASTLINE**

9940 – BLUE



[GO TO INDEX](#)

FASTLINE



9941 – BLACK





[GO TO INDEX](#)

**FASTLINE**

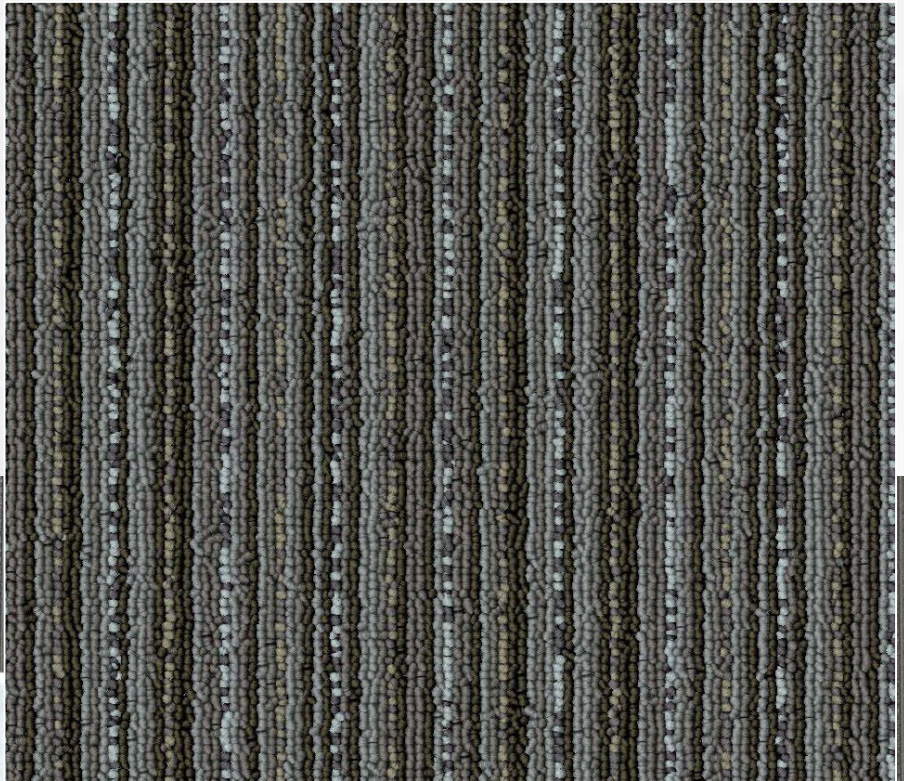
9941 – BLACK





[GO TO INDEX](#)

# FASTLINE



9942 – GREY





[GO TO INDEX](#)

**FASTLINE**

9942 – GREY



[GO TO INDEX](#)

# FASTLINE



9943 – RED





[GO TO INDEX](#)



**FASTLINE**

9943 – RED



[GO TO INDEX](#)  
[GO TO INDEX](#)

# FASTLINE



9944 – BEIGE





[GO TO INDEX](#)

**FASTLINE**

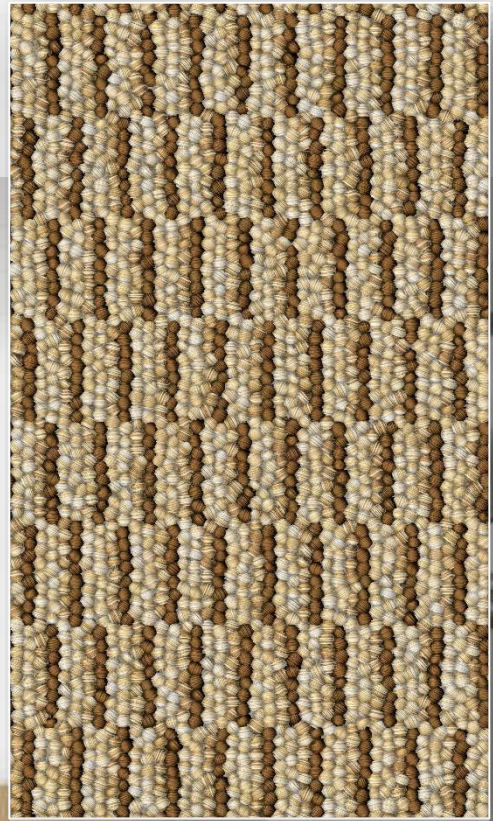
**9944 – BEIGE**





[GO TO INDEX](#)

**ZIGZAG**



9926 – BEIGE



[GO TO INDEX](#)

**ZIGZAG**

9926 – BEIGE



[GO TO INDEX](#)

**ZIGZAG**



9927 –  
BEIGE GREY





[GO TO INDEX](#)

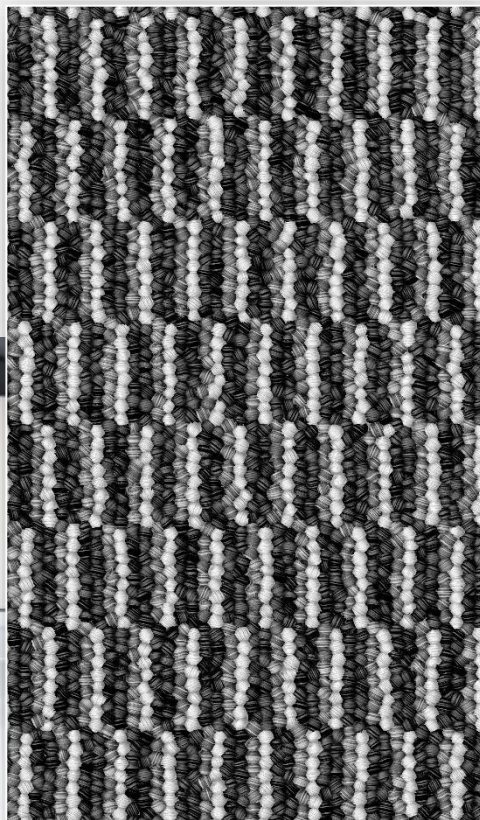
**ZIGZAG**

9927 –  
BEIGE GREY



[GO TO INDEX](#)

**ZIGZAG**



9929 – L.GREY





[GO TO INDEX](#)

**ZIGZAG**

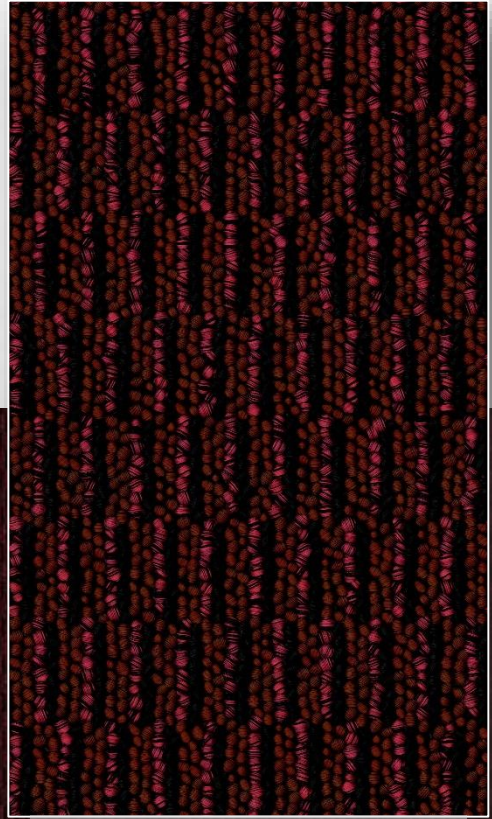


9929 – L.GREY



[GO TO INDEX](#)

**ZIGZAG**



9928 – RED





[GO TO INDEX](#)

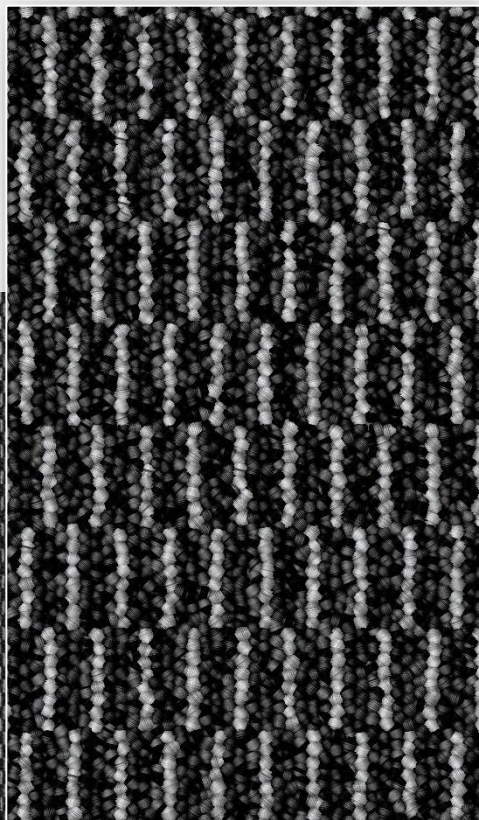
**ZIGZAG**

9928 – RED



[GO TO INDEX](#)

**ZIGZAG**



9930 – D.GREY





[GO TO INDEX](#)

**ZIGZAG**



9930 – D.GREY



[GO TO INDEX](#)

**ZIGZAG**



9931 – BLUE





[GO TO INDEX](#)

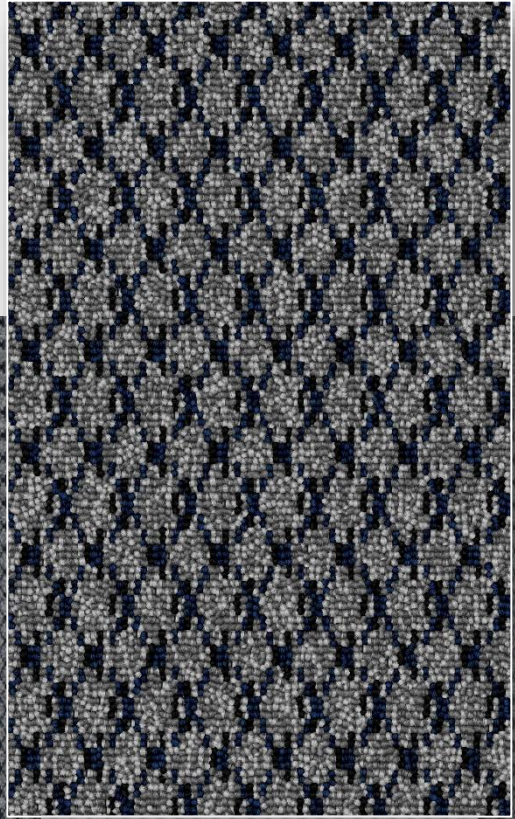
**ZIGZAG**

9931 – BLUE



[GO TO INDEX](#)

# HIGHWAY



9936 – GREY





[GO TO INDEX](#)

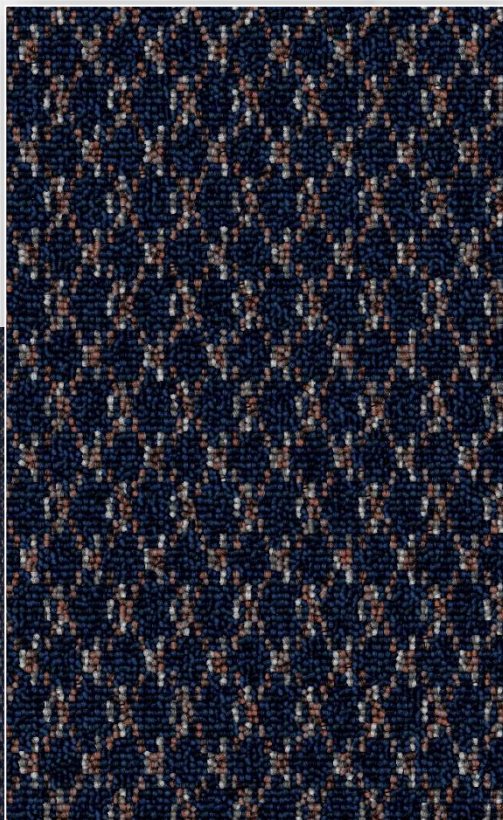
# HIGHWAY

9936 – GREY



[GO TO INDEX](#)

# HIGHWAY



9937 – BLUE





[GO TO INDEX](#)



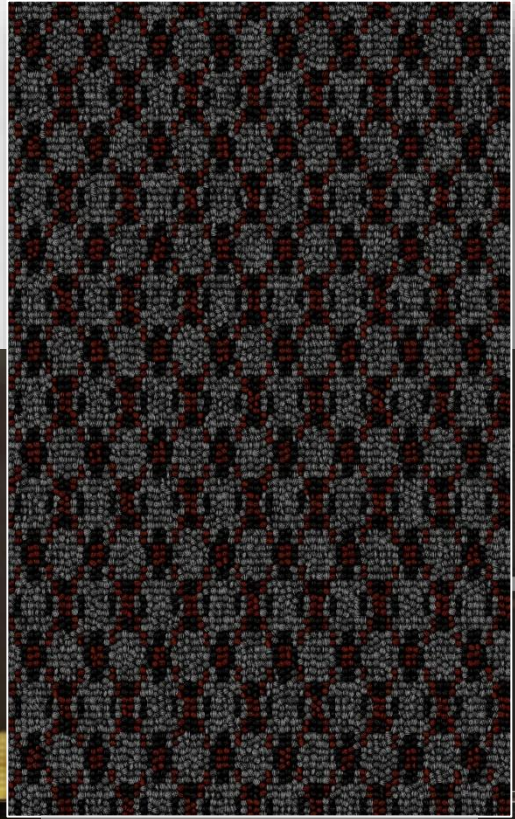
**HIGHWAY**

9937 – BLUE



[GO TO INDEX](#)

# HIGHWAY



9938 –  
GREY RED





[GO TO INDEX](#)

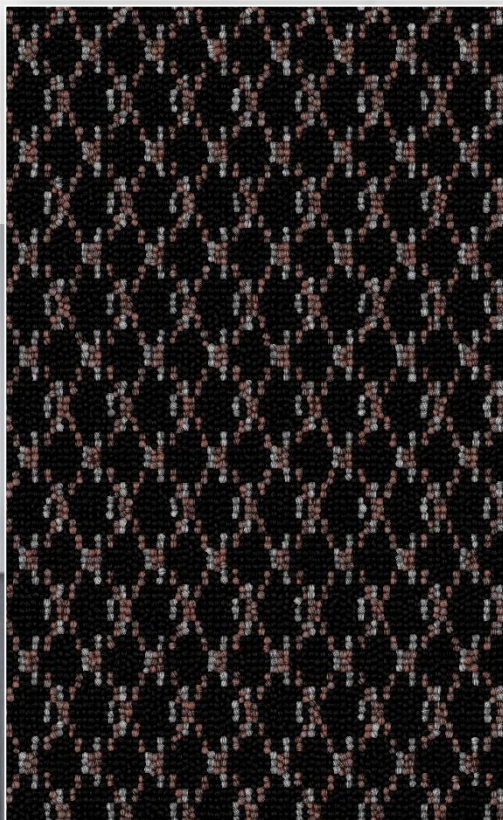
**HIGHWAY**

9938 – G.RED



[GO TO INDEX](#)

# HIGHWAY



9939 – BLACK





[GO TO INDEX](#)



**HIGHWAY**

9939 – BLACK





[GO TO INDEX](#)

# ROMANCE



9933 – RED



[GO TO INDEX](#)

# ROMANCE

9933 – RED



[GO TO INDEX](#)

# ROMANCE



9935 – BLUE





GO TO INDEX

**ROMANCE**

9935 – BLUE





[GO TO INDEX](#)

# ROMANCE



9934 – GREY





[GO TO INDEX](#)

**ROMANCE**

9934 – GREY





[GO TO INDEX](#)

# ROMANCE



9932 – BROWN





[GO TO INDEX](#)

**ROMANCE**

9932 – BROWN





# TECHNICAL SPECIFICATIONS

CONSTRUCTION	GRAPHIC LOOP PILE
YARN TYPE	100% SOLUTION DYED P.P.
PILE WEIGHT	400 GR / M <sup>2</sup> (± 5%)
TOTAL WEIGHT	1350 GR / M <sup>2</sup> (± 5%)
PILE HEIGHT	4 MM
PRIMARY BACKING	WOVEN POLYPROPYLENE
SECONDARY BACKING	FELT BACK
STANDARD ROLL WIDTH	3.66 MTR.
STANDARD ROLL LENGTH	35 MTR.

NOTE:

1. SPECIFICATIONS ARE SUBJECT TO CHANGE WHEN THEY IMPROVE PRODUCT OR PERFORMANCE.
2. SLIGHT COLOR VARIATION MAY OCCUR FROM DYE LOT TO DYE LOT.



Sound  
Insulation



Heat  
Insulation



Anti-static



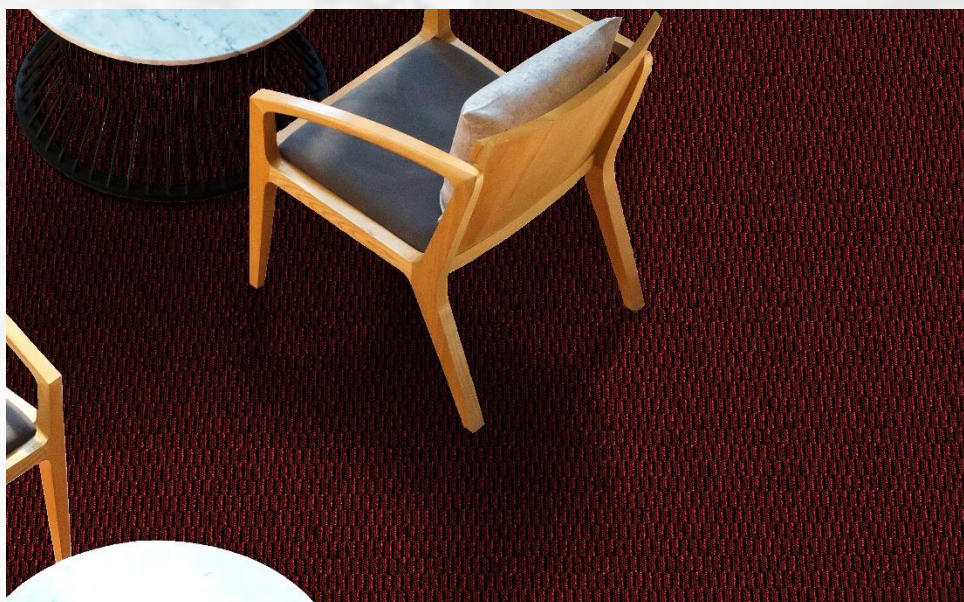
Colorfast



Wearproof



Anti  
Flammability





**“GRAPHIX IS  
INTELLIGENCE  
MADE VISIBLE.”**

*Hego*